

Hello, We are DNAi

DNAi



Pavel Wimmer
CEO, DNAi
pavel.wimmer@dnai.ai



Our uniqueness

240+

Leading
multidisciplinary
experts

Big Data, Mathematics,
Statistics, Multiple AI domains,
Latest R&D

20+

years
of experience

Large scales IT architectures
and new IT technologies

Helping you
define
an AI strategy

... and operating model,
integrate AI applications into
flexible business processes
and the wider ecosystem.)

Computer Vision



SAMPLE TAGS

No sample tags

LABEL TAGS

No label tags

LABELS

1 ✓

yolov5_run_0 2,921

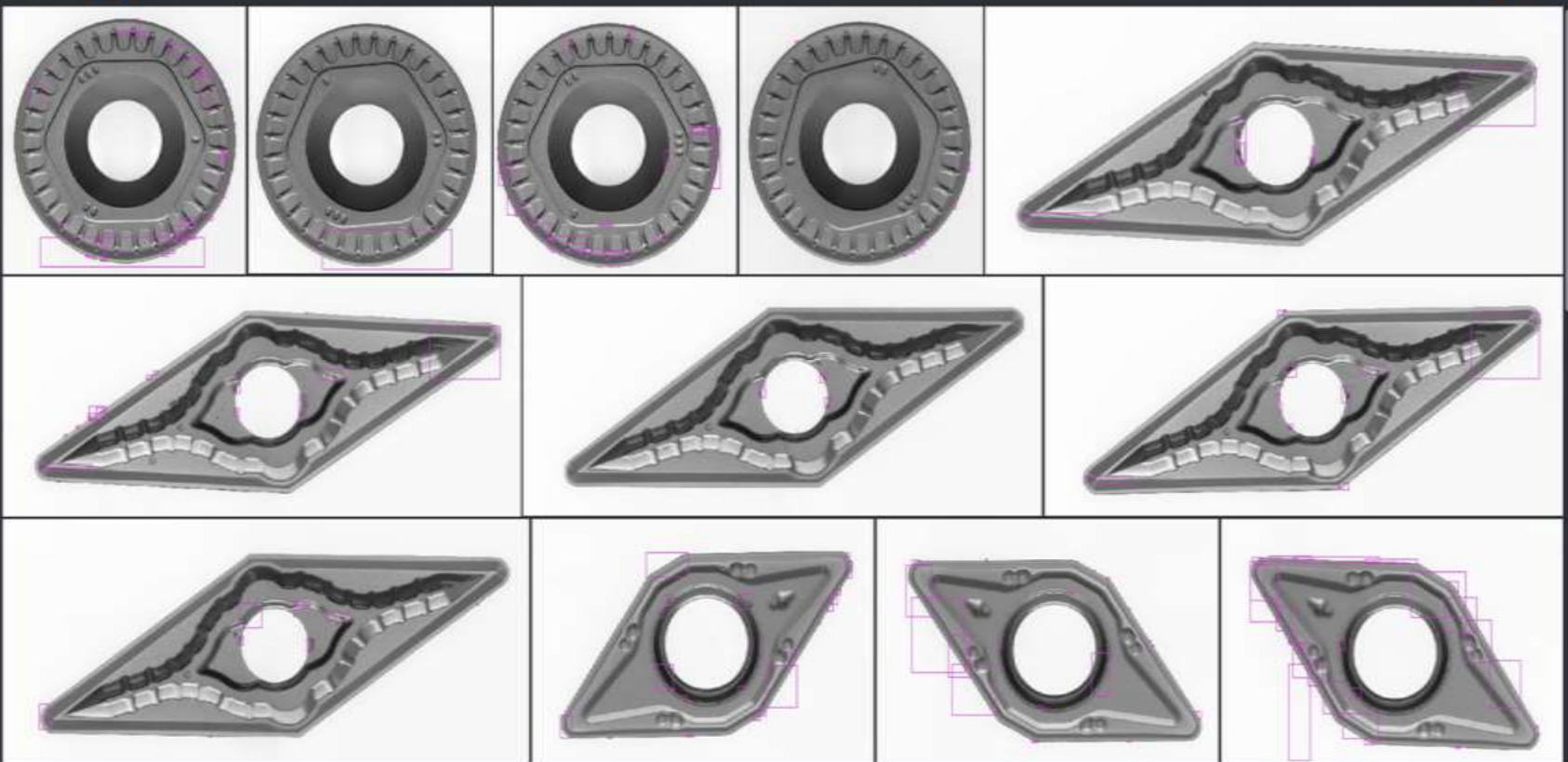
Labels

<input type="checkbox"/> material na hrane	1,671
<input type="checkbox"/> ostipanje hrane	737
<input type="checkbox"/> trhlina	502
<input type="checkbox"/> nalepenina	11

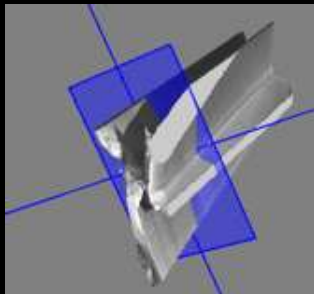
Confidence

0.00 1.00

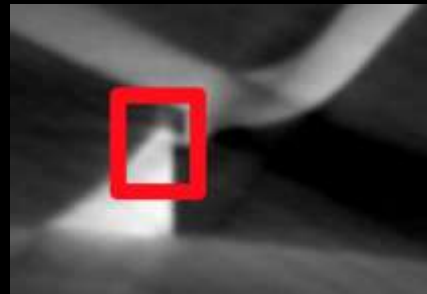
OTHER FIELDS

☐ id 164☐ filepath 164

Inspekce svárů



weld 3D
inspection





Zuzana Kibritov

Print report

Cultivation time: **115h:40m**

Fertilization date: **30.3.2017**

Date of birth: **Invalid date**

9

3

0

3

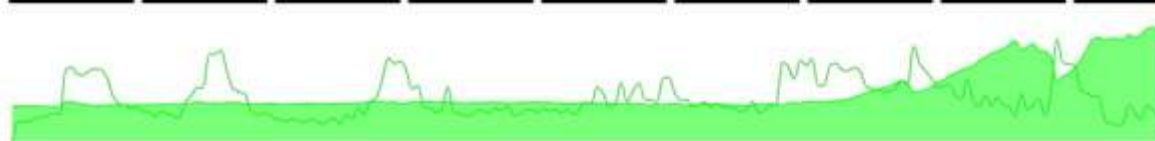
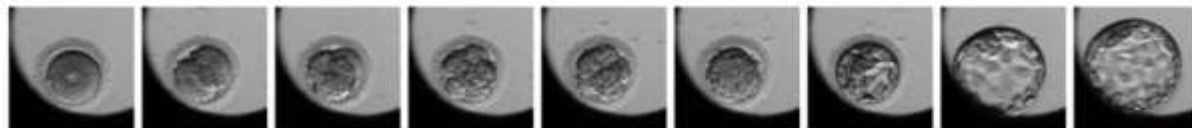
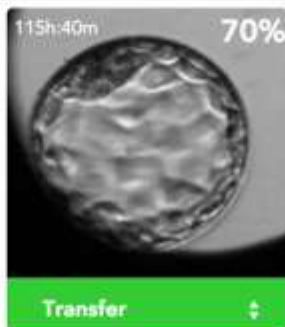


Petri dish No.: 9

Hatching Blastocyst

1aa

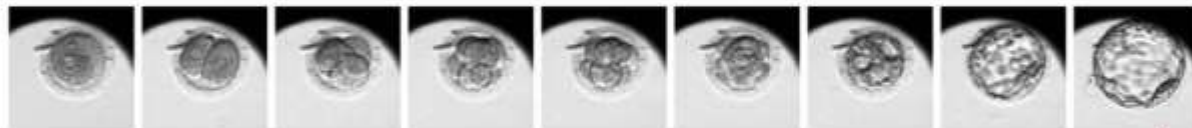
☐ Compare cycles



Hatching Blastocyst

1aa

☐ Compare cycles

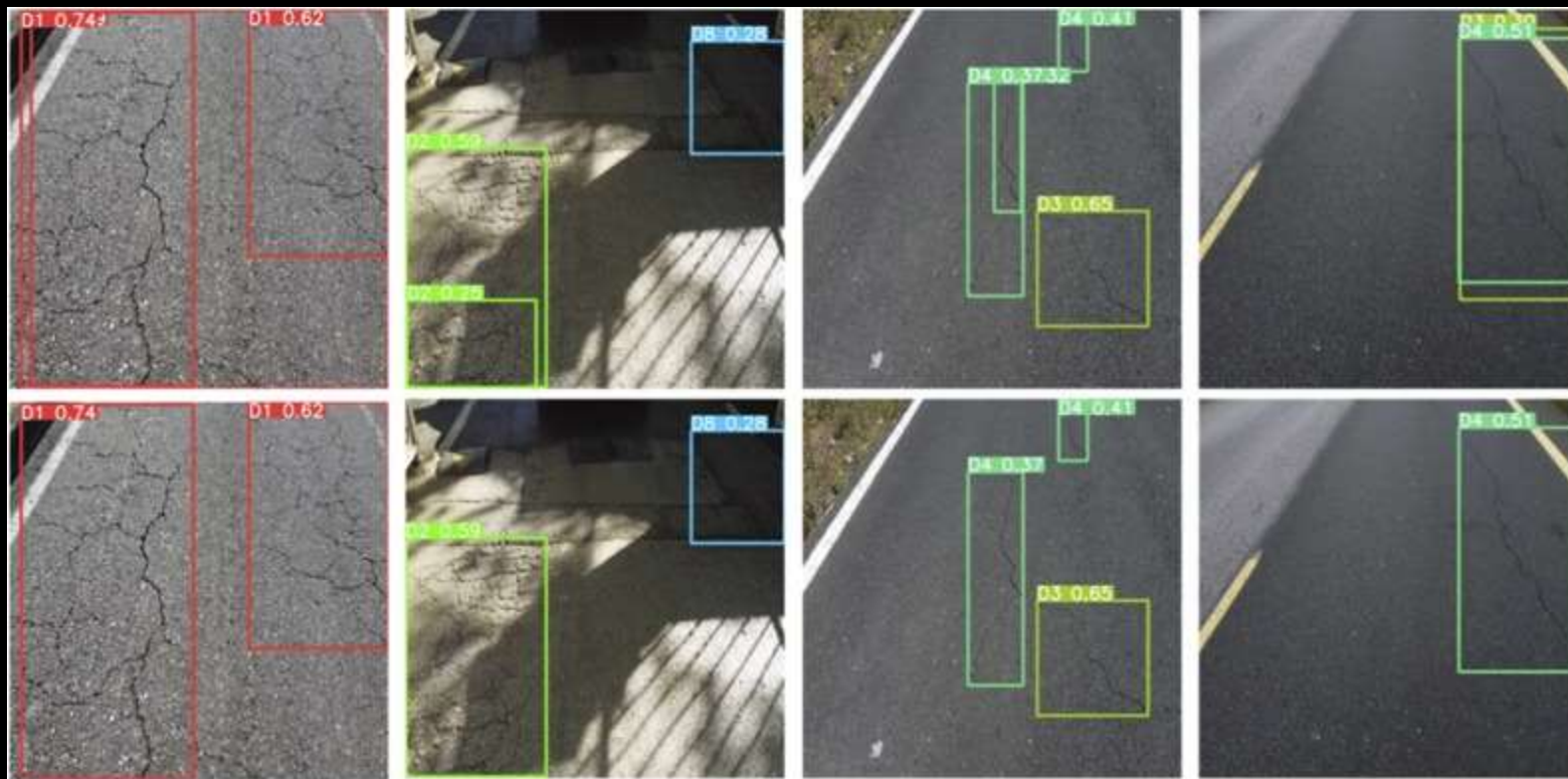


IVF Clinic – automatická detekce kvality embrií

Computer Vision

Video analytics







Building segmenta tion

DNAi

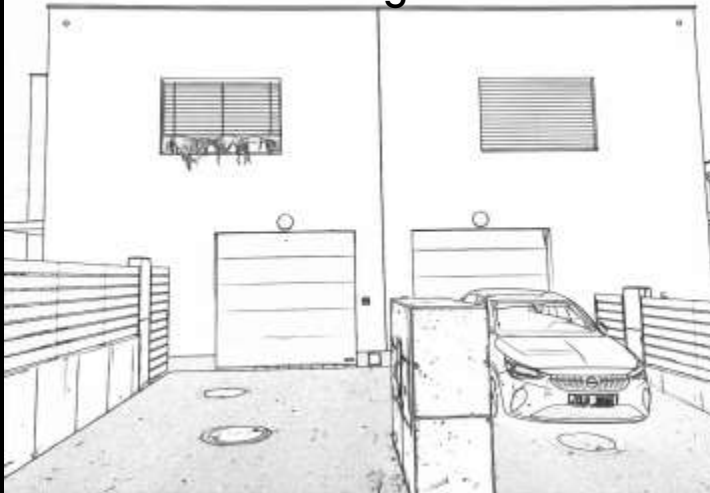
Original image



AI Segmentation

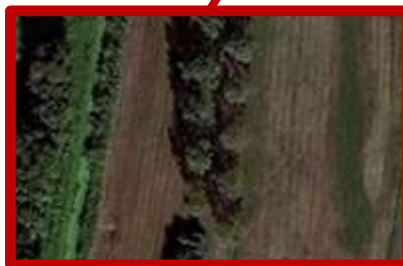


AI building elements

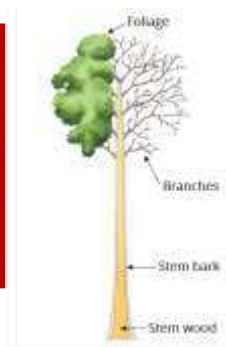


New facade





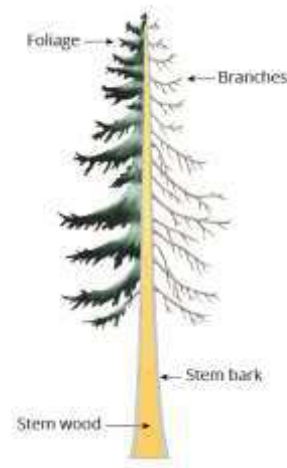
Stem wood: 98 kg
Stem bark: 14 kg
Branches: 18 kg
Foliage: 13 kg
Total: 122 kg



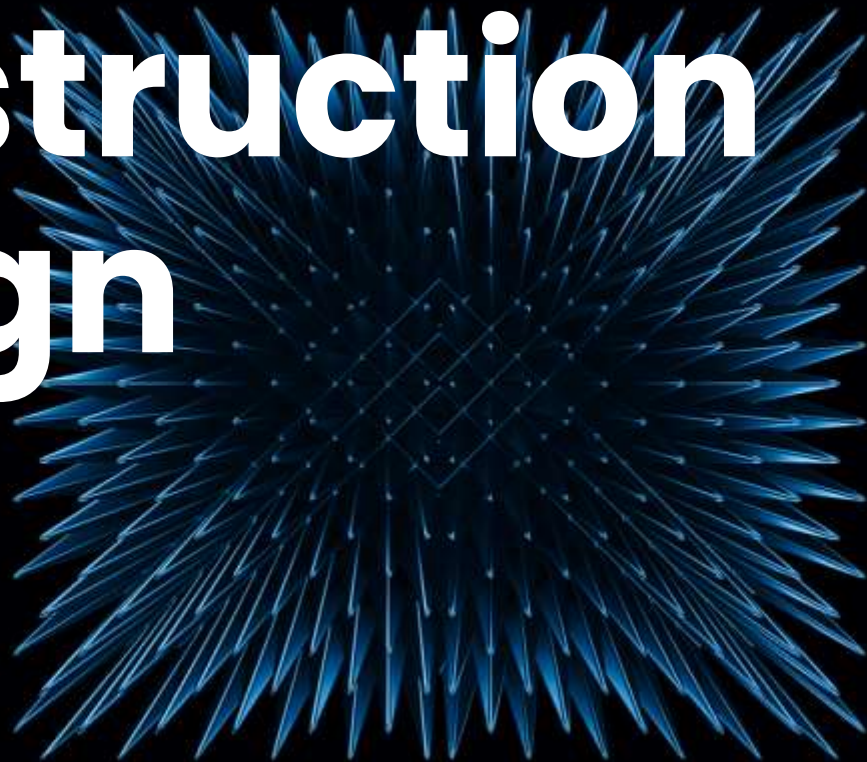
0.02 trees per m²
Height ~ 8m
=> DBH ~ 40cm

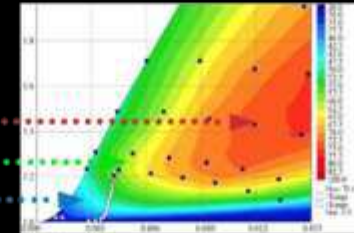
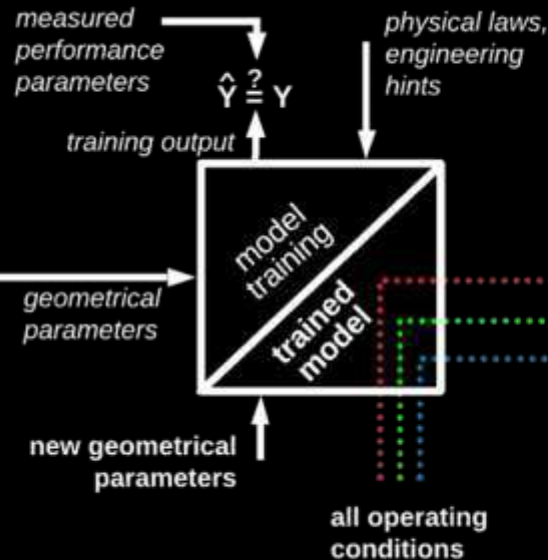
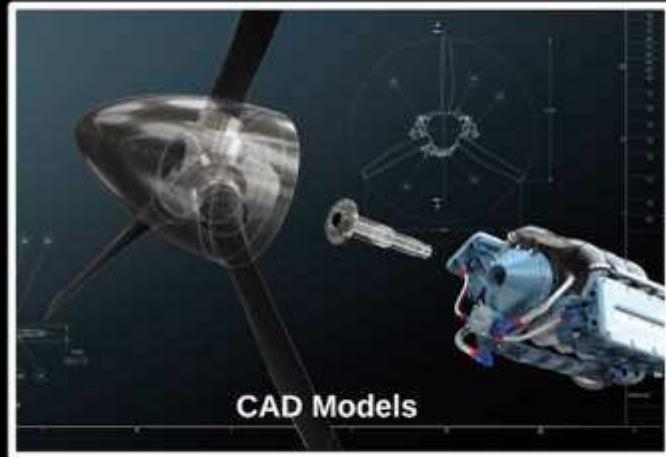
0.07 trees per m²
height ~ 25m
=> DBH ~ 1m

Stem wood: 3150 kg
 Stem bark: 205 kg
 Branches: 1206 kg
 Foliage: 256 kg
 Total: 4817 kg



Construction Design





predicted performance parameters (e.g. efficiency) for all operating conditions (e.g. wind turbine speeds)

Education, Quality, Work & Safety

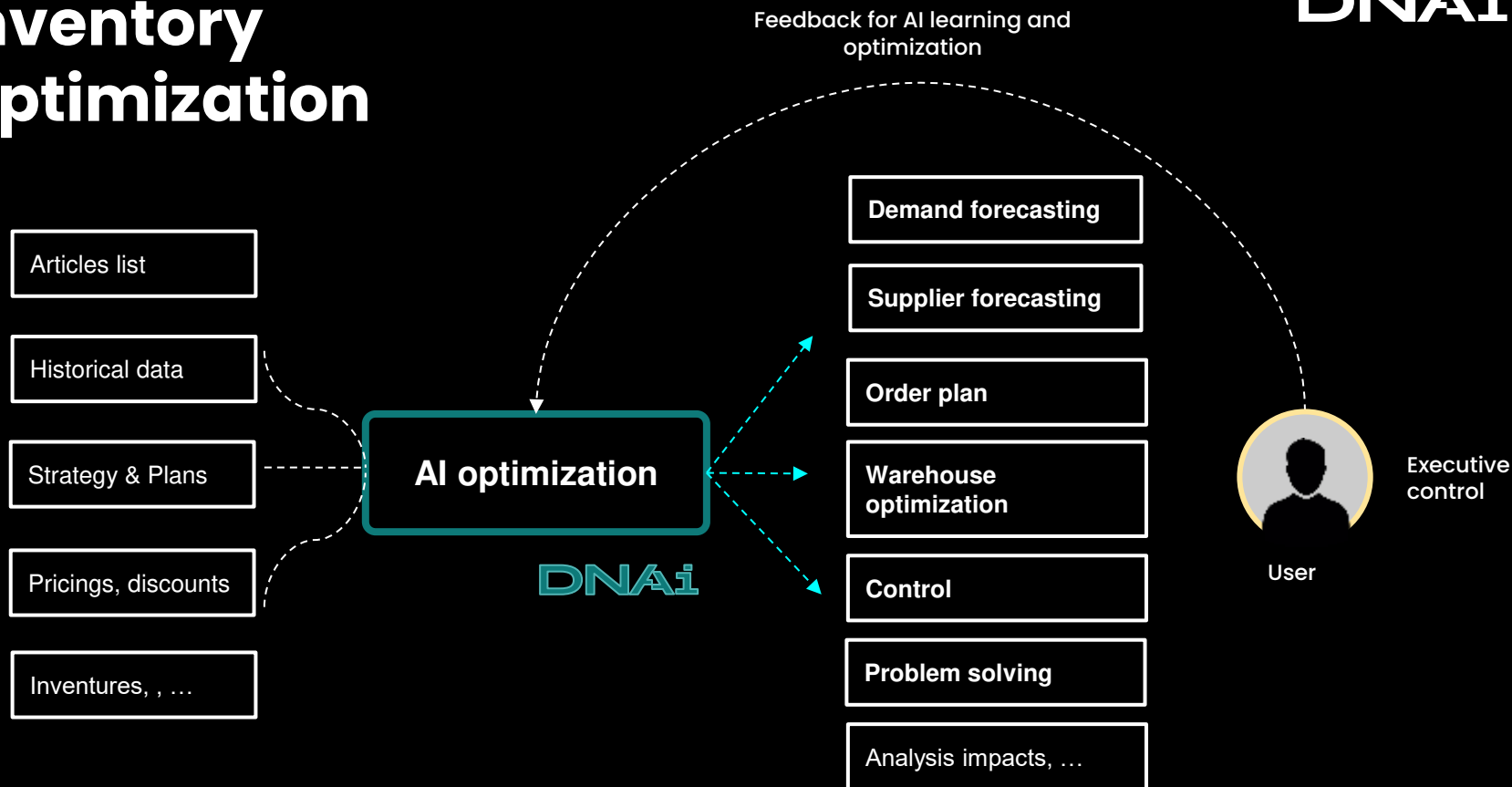




Supply Chain

Inventory Optimization

DNAi



Forecast algorithm

Forecast 10000+ items

Cloud platform

Hierarchical forecast: Region/Store/Product family

Probabilistic forecast

Historical data, important events, holidays, weather.

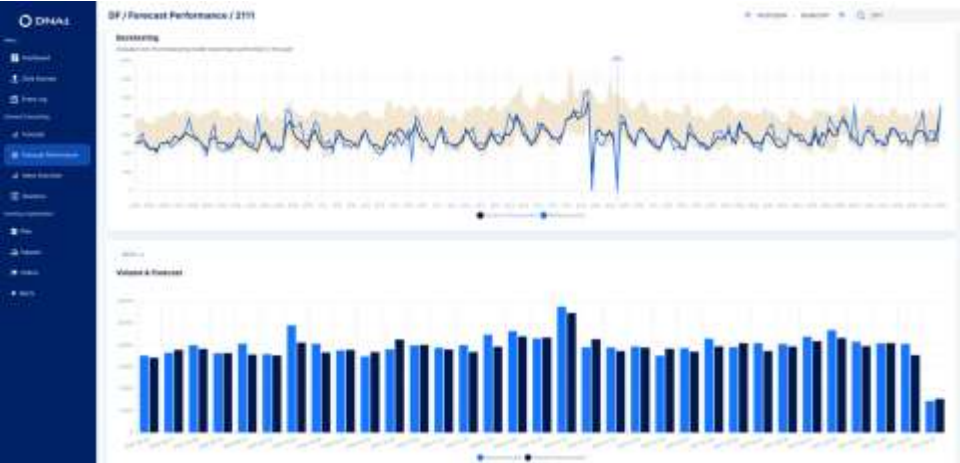
Solution utilizes ensemble of neural networks, regression trees and statistical methods.

Industries:

Retail

Logistics

Manufacturing



PoC

Forecast Q1 2023

45 000 000 packages yearly

Average global error 3,9%

80% errors under **5%**

Lead time: **4 weeks**

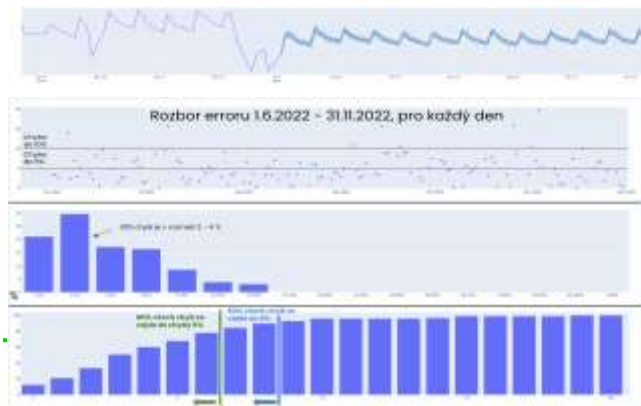
Probabilistic forecast

Global/Country/Region/Postcode forecast

DEMO

Available in cloud platform MyIO

Forecast calculation, performance monitoring, retrospective evaluation of previous years, change in time series dynamics



**20
000+**

Items Inventory
optimization

15%

Stock level
improvement

35%

Improvement on daily forecasts
against base solution

Forecasting model per time series

- ↳ Taking into account large seasonality
- ↳ Aggregation Weekly, Monthly
- ↳ Preliminary results suggest **15% stock level improvement**, while reducing stockouts



Menu

Dashboard

Data Sources

Items

BOM

Stockout

Event Log

Demand Forecasting

Forecast

Forecast Performance

Items Overview

Inventory Optimization

Plan

Warehouse

Impacts

Buyer

First name
Last name
Email

Petr
Marek
petr_marek@dnai.ai

Managed items

[Detail >](#)

Items
Units
Total price
Suppliers

154
804660
180 477 597,52 CZK
367

Orders to submit

[Detail >](#)

Critical orders
Next 14 days
Total orders
Total items
Total price
Next 30 days
Total orders
Total items
Total price

8
15
32344
2 862 252,93 CZK
51
152453
29 499 768,64 CZK

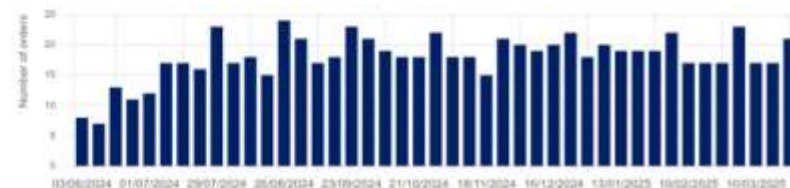
Incoming orders

[Detail >](#)

Next 14 days
On time orders
Delayed orders
Next 30 days
On time orders
Delayed orders

1
0
1
0

Orders

[Detail >](#)
☒ ORDERS TO SUBMIT ☐ INCOMING ORDERS


In Stock

[Detail >](#)
☐ SHOW ITEMS WITHOUT STOCK OUT


Filters ⓘ

5245

01/01/2023

- 03/06/2024

Reset

WEEK ▼

Range 01.01.2023 - 31.12.2024

Reality Mean

218.62

Root Mean Squared Error

320.23

Error Mean

66.92

Abs. Error Mean

217.75

Error Percentage

4.36 %

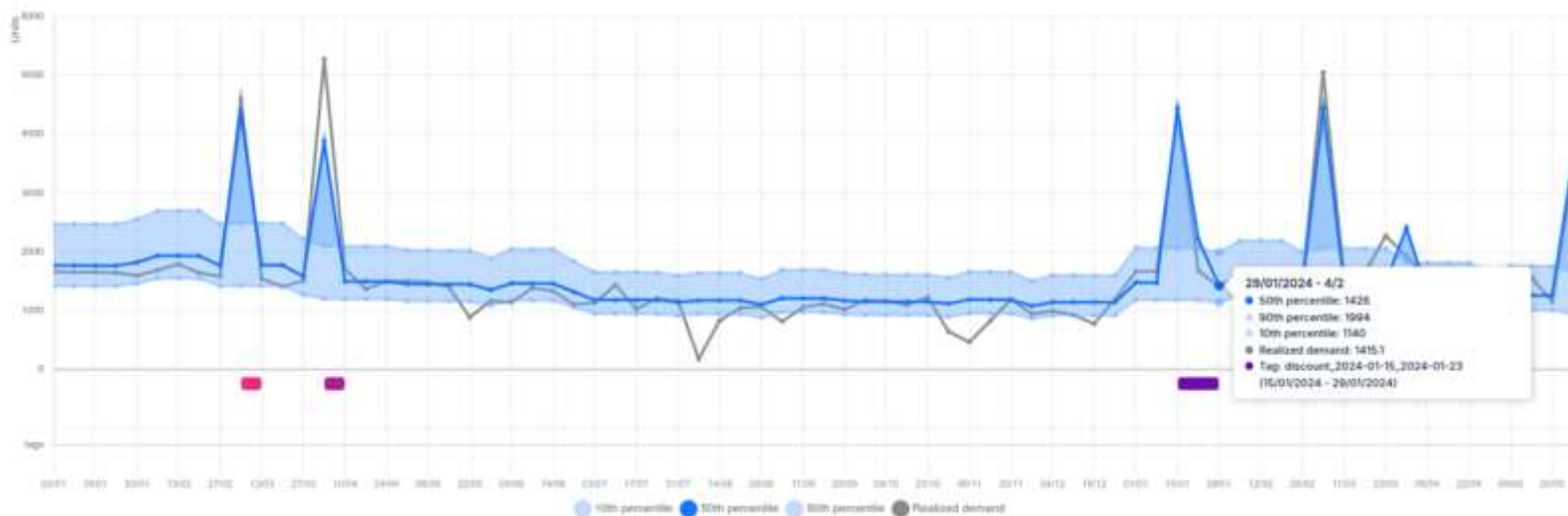
Abs. Error Percentage

14.20 %

Backtesting

Evaluate how the forecasting model would have performed using past data to assess prediction accuracy.

Reset zoom



Filters ⓘ

Pharmacy form ▾

🔍 Search in BOM

Bill of Materials

Bill of Materials (BOM) displays a hierarchical structure of all components and materials needed to assemble a product, enabling efficient inventory tracking and planning.

▼ Lékárna - Aplikční formy

▼ Tablety a kapsle

- 📄 Ibalgin Rapidcaps 400 mg 30 měkkých tob...
- 📄 Ibalgin 400 mg 96 tablet
- 📄 Ibalgin 400 mg 48 tablet
- 📄 Brufen 400 mg 100 tablet
- 📄 Paralen 500 mg 24 tablet
- 📄 **Dr. Max Paracetamol 500 mg 20 tablet**
- 📄 Ataralgin 20 tablet
- 📄 Junior-angin 36 pastilek
- 📄 Gaspan 14 měkkých tobolek

▼ Nosní spreje

- 📄 Otrivin Breathe Clean jemný nosní sprej s A...
- 📄 Muconasal Plus nosní sprej 10 ml
- 📄 OLYNTH® HA 0,5 mg/ml nosní sprej, roztok...

▼ Kapky

- 📄 Ophthalmol-Septonex oční kapky, roztok 10...
- 📄 Stoptussin kapky 50 ml
- 📄 Visine Classic oční kapky 15 ml

▼ Gely a masti

- 📄 Voltaren Forte 20 mg/g gel 150 g
- 📄 Fenistil 1 mg/g gel 30 g
- 📄 Bepanthen mast 100 g

▼ Sirupy

- 📄 Mucosolvan sirup 100 ml
- 📄 Robitussin Antitussicum sirup 100 ml
- 📄 Erdoned 35 mg/5 ml perorální suspenze 10...

▼ Sáčky a prášky

- 📄 Paralen Grip Horký nápoj pomeranč a zázv...
- 📄 Oscilloccinum perorální granule 30×1 g

Dr. Max Paracetamol 500 mg 20 tablet



id: 1297

url: <https://www.drmax.cz/dr-max-paracetamol-500-mg-20-tablet>

price: 35,00 CZK

unit: 20 tablet

Tags: TABLETS ORAL PAIN FEVER GENERIC

Item: Dr. Max Paracetamol 500 mg (1297)

Forecast

Forecast Performance

Warehouse

Farma - Cost of Goods

Calculating manufacturing costs for products after changes in formulation, manufacturing process and created amount.

Within seconds user can get precise estimation of new product which is within 10%, which was not manufactured before.

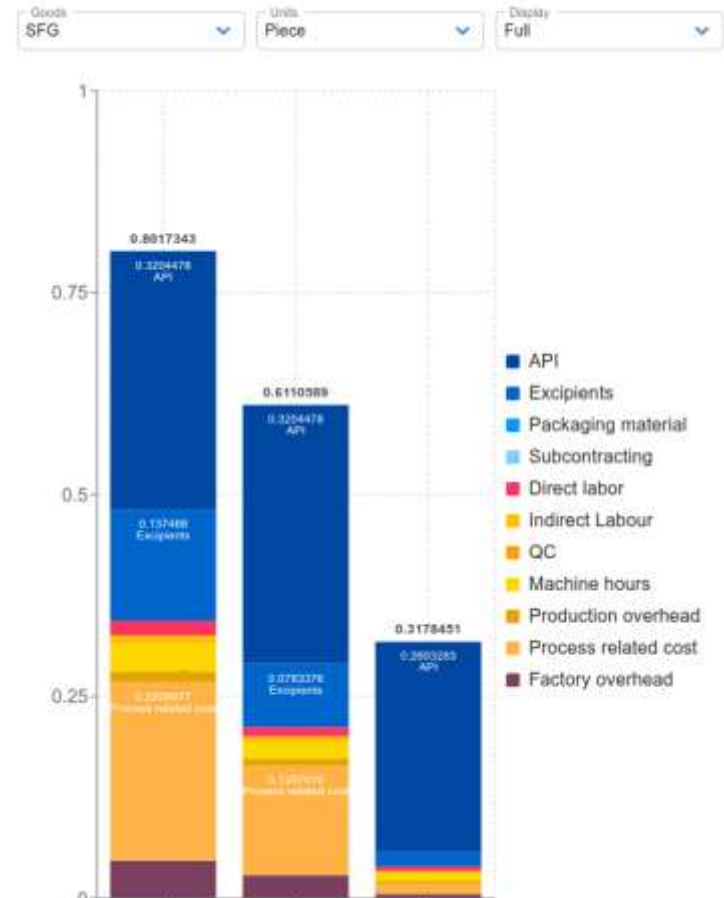
Without Platform estimation of costs for new formulation takes up to 2 months, due to capacity and estimation complexity.

Algorithm estimates using regression and matching similar products, manufacturing times on new machines.

Complete overview of production process, with ability to change each step within Platform.

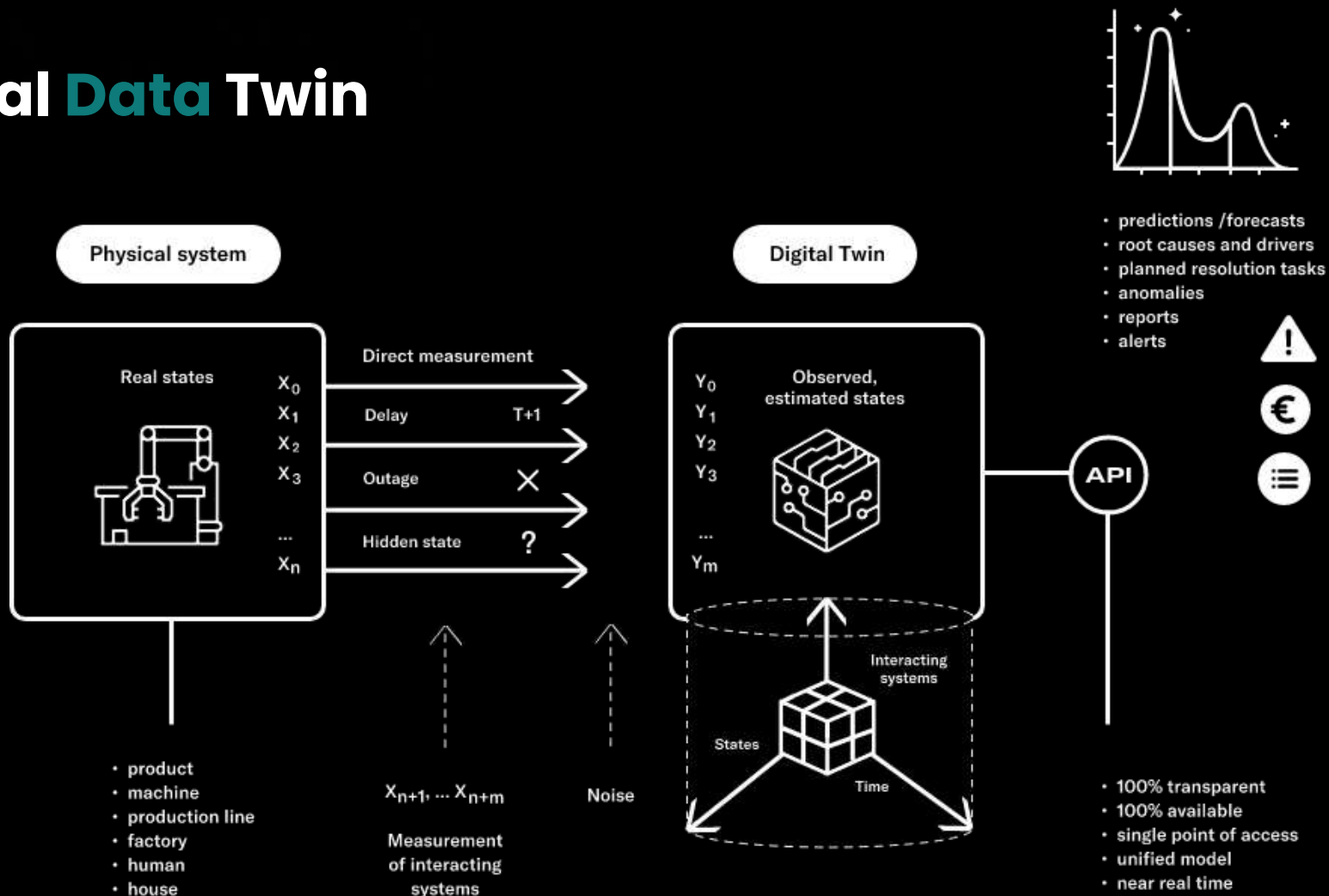
Provides manufacturing costs for new formulations of products within seconds.

New formulation can save millions in manufacturing costs compared to old formulations.



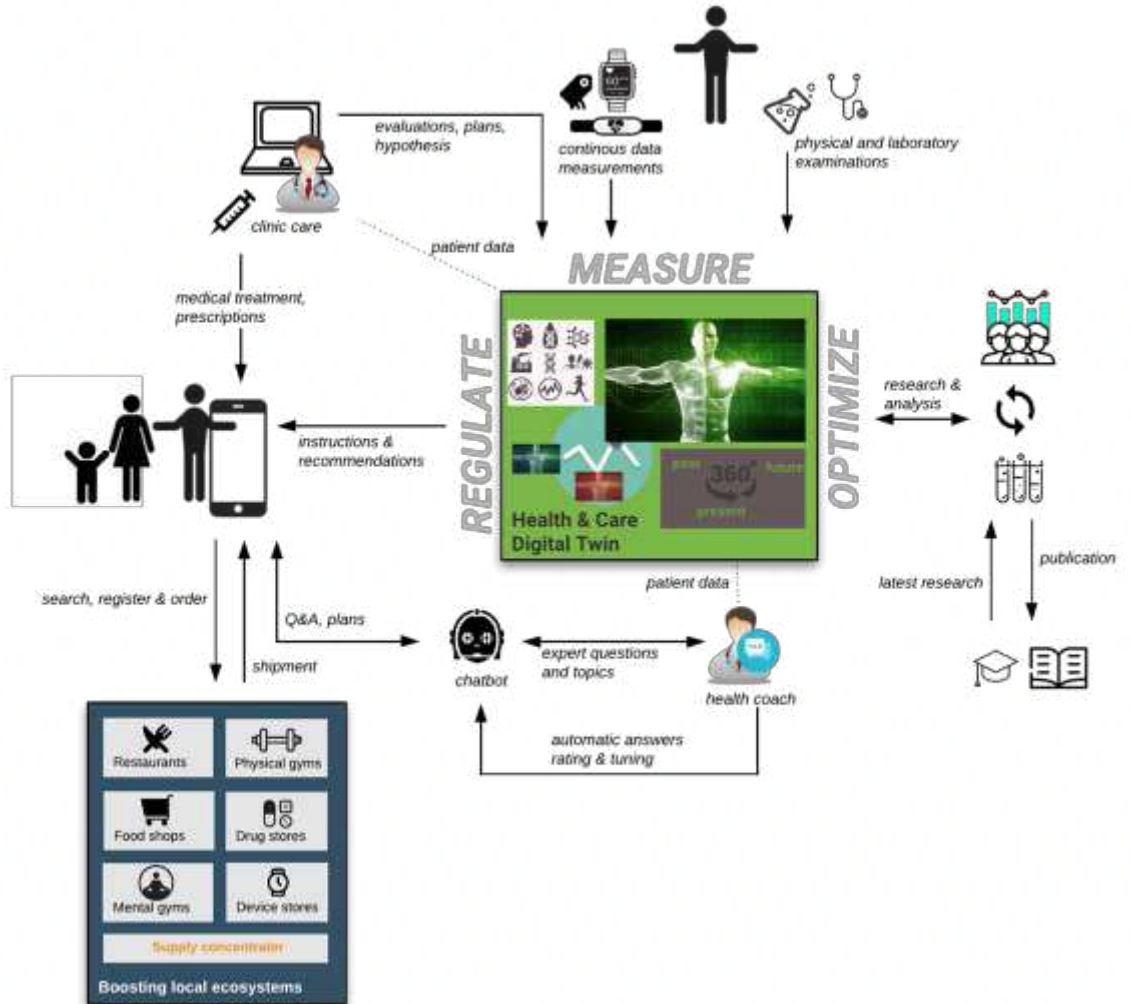
Digital Twin

Digital Data Twin



Digital Twin

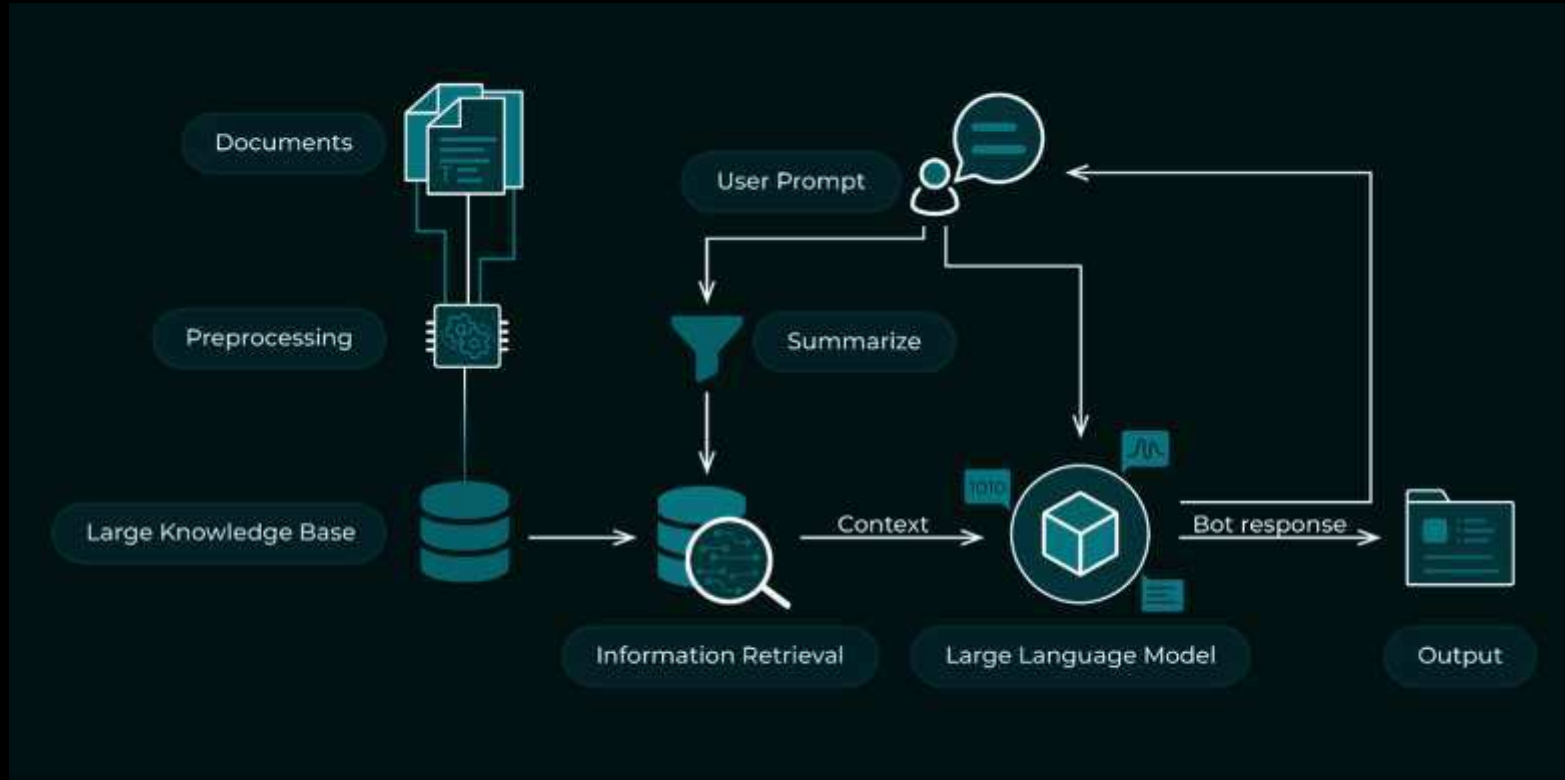
Digital twins are represented by different models. The main function of these models is to **accurately reproduce the properties, behaviour and rules of a physical object**.



Cognitive Agent



Cognitive assistant architecture



A blurred background image of a call center setup. In the foreground, a laptop is open with a headset resting on it. The headset has a microphone and earpieces. The background is out of focus, showing more of the laptop and some abstract digital icons like a globe, concentric circles, and a group of people icons. The overall color scheme is blue and white.

Call Centrum

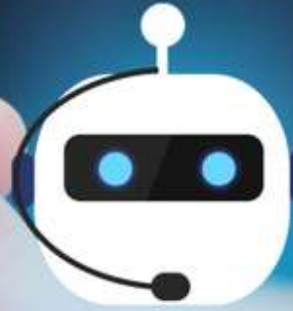
950 191 590

Intranet / Internet





L1, L2, L3 Support



What can i help
you with?

Realtime Education / Knowledge management

Shared Services Centers



AI AUDIT



Thank you!

Pavel Wimmer

CEO, DNAi

pavel.wimmer@dnai.ai



   / @dnaigroup

DNAi

